

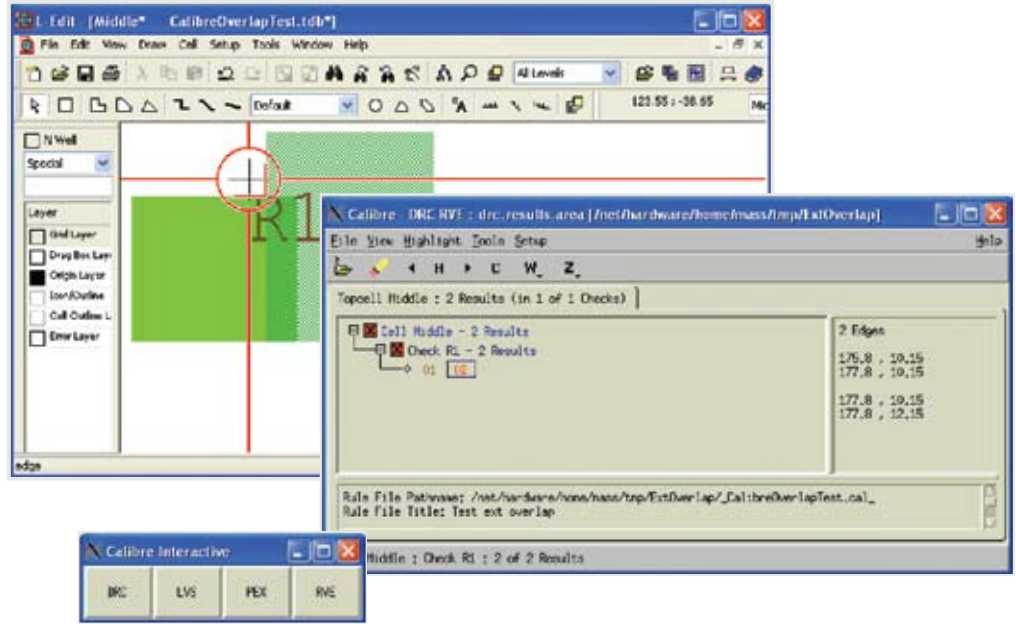
EVI FOR CALIBRE® INTEGRATION

Product Benefits

- Efficiently integrate your sign-off verification tools with Tanner Tools™.
- Protect your investment in EDA Tools with seamless integration.

Product Features

- View Calibre LVS results directly in L-Edit™ and S-Edit™.
- Highlight nets and/or devices in L-Edit and S-Edit.
- Perform layout to schematic cross-probing.
- Maximize productivity with an efficient verification platform.
- View Calibre PEX results directly in L-Edit and quickly inspect parasitic capacitances, sorted by node or layer.
- View Calibre DRC errors directly in L-Edit.
- Run Calibre on an L-Edit or S-Edit design.
- Works across the network, allowing Linux® based Calibre to work with Windows® based Tanner Tools.



Seamless Integration of Sign-off Verification Tools

External Verification Interface (EVI) provides an interface for users of Mentor Graphics' Calibre® tool suite, to use L-Edit and S-Edit for layout and schematic capture. Used in conjunction with the Calibre RVE product, you can view Calibre DRC errors, LVS results, and PEX parasitics in L-Edit and S-Edit. EVI is also compatible with Calibre Interactive, which allows users to run DRC & LVS on L-Edit and S-Edit designs from within Calibre Interactive.

Protect Your Investment

Designers who have already invested in Calibre and Calibre RVE can now get more value from their Tanner flow with the seamless integration provided by EVI. You can quickly and efficiently review verification results and make necessary changes in your design in L-Edit and S-Edit. EVI connects your Unix/Linux based Calibre with your Windows based Tanner Tools.

Efficient Verification Platform

EVI performs cross-probing between L-Edit/S-Edit and verification results. You can view parasitic information directly in L-Edit such as parasitic capacitance. With our complete integration, you can quickly iterate verification runs and intuitively browse hierarchical SPICE netlists for faster LVS.

Benefit From Flexible Licensing

When you purchase a new design tool, licensing options can greatly affect your total cost of ownership. EVI is available in node-locked and networked configurations offering you the most flexible licensing possible. With a single solution, EVI will work whenever and wherever, meeting the design needs of your main workgroup and remote workers. If you offshore design projects, EVI does not have geographic restriction on its licenses, thus, lowering your total cost of ownership.